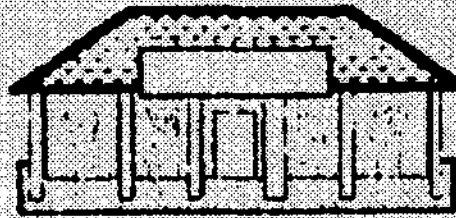


April, 2005

GLENDALE HERITAGE PRESERVATION



DEPOT DOIN'S

2005 OFFICERS

Bob Galbraith, President
Scott Vaaler, VP Depot Operations
Bob Swain, VP Community Events

Rachel Schmid, VP Preservation Activities
Ralph Hoop, Treasurer
Pamela Bailey, Secretary

GHP- Community Activities 2005

*By: Robert L. Swaine, Jr.,
GHP Vice President of Community Events*

The 14th annual GHP Pancake Breakfast was held on April 9 at Town Hall.

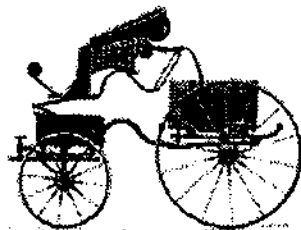


Everyone looks forward to seeing friends and neighbors and having a chance to become reacquainted and enjoy a delicious meal

together. I want to thank all the volunteers who prepared and served the food, and the merchants, artisans, and residents, who donated merchandise for the popular silent auction and door prizes. Their hard work and generosity helped make this event enjoyable and successful for both GHP and the 1200 hungry souls who joined us for breakfast.

Horse and Carriage Returns to Glendale

The Ohio Valley Carriage Club and the Glendale Historic Preservation are joining to present an exhibition of carriage driving on Saturday afternoon, May 7, from 11 am until 4 pm. (A rain date of June 11 is reserved.)

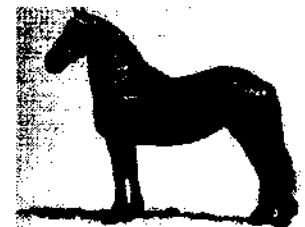


More than 20 restored antique carriages with drivers decked out in historic 19th century costume will be drawn by horses and ponies along the roads of the

Glendale Historic District.

Residents on the drive route have begun inviting friends from outside the district to view this event from their front lawns. Lawn chairs are being brought to the front yard and refreshment tables are planned. Some residents are providing English tea, others will host potluck lunch and still others plan BYOB and chips for their guests.

GHP, the sponsor of this event, is providing lunch for the drivers and grooms at the Depot from 12:30 until 2. Horses will drink and rest in the Village Square beside the Depot.



Everyone is looking forward to a warm and sunny spring afternoon, especially the photographers, both amateur and professional.

To create the flavor of 150 years ago, cars are requested to be parked outside the Historic District residential area.

For further information, please contact Barbara Hoop at 771-9142 or call GHP Depot Museum, Thursdays and Saturdays 11 am - 3 pm, 771-8722.

Finally, on behalf of GHP I want to thank the Board of Trustees and all the volunteers who help make Glendale a wonderful community in which to live.

Gift Shop

Have you visited the Depot Gift Shop lately? Glendale is blessed to have so many artists, and the museum is proud to offer some of their fine work.



Stop by and see for yourself on Thursdays and Saturdays from 11 am til 3 pm.

Preservation News

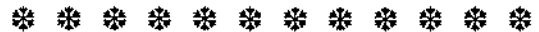
By: Rachel Schmid, GHP Vice President of Preservation Activities



Sales of the book The Village of Glendale, 1855-2005 have been excellent. We've already reached 60% of our sales

goal for the sesquicentennial year. The demand from former Glendale residents has been tremendous, particularly from those who grew up in Glendale and have moved away. This book is a wonderful keepsake for children currently growing up in the Village and many households have purchased extra copies so that when their children are adults they'll have this history of the unique and special place where they grew up.

In the last few years many new homes have been built and old homes have changed hands. New residents may not be aware of the rich history of this community. This book is an easy read and will provide perspective and information otherwise not readily available.



Village Council recently passed an ordinance designating over 300 homes in the Historic District as contributing structures. This terminology is more consistent with historic districts across the country and national preservation organizations. Previously these homes had been referenced to as 'background' structures. As in the past, all homes in the Historic District must review plans for any exterior change with the Glendale Planning and Historic Preservation Commission – there is no change in this procedure.

Are you a descendent of the first 30 families in Glendale?

The GHP does not have sufficient records to answer this question. The mayor would like to recognize these decedents in the Memorial Day Parade so if you are one of these people please call the village office (771-7200) and let them know who you are.

Along this same line, one of the objectives of the GHP is to be able to tell people about who lived in their home. To do this we need to develop some genealogical data for each of the homes in the village. If you have some interest in doing this kind of research, know of records of your family or would like to learn about how to do genealogical research please contact Bob Galbraith at 771-4988 or by email at rmgalbraith@zoomtown.com. Perhaps we can form a genealogical group within the GHP.

Sesquicentennial Walking Tour brochures are now available at the Depot.





GHP is requesting out-of-town addresses for previous Glendale residents in order to keep them informed of current Glendale activities and events. If you know of any, please email glendalebook@hotmail.com.



Tell us about your house!

GHP is compiling information on the houses of Glendale and would love to hear from you regarding your home.

Here are some questions to get you started:

- Your house address*
- Names of persons currently living at this address. How long?*
- Tell us as much as you know about previous owners or occupants. Do you know the names of the original occupants?*

Tell us as much as you know about when the house was built and any significant changes over the years. Do you know the name of the builder?

Do you have pictures of your house or occupants that you would give to us or let us copy?

Do you have any maps, drawings, or records about the history of your house?

What interesting events have happened at your house? Is there a link with other Glendale residents or organizations?

Please mail information to:

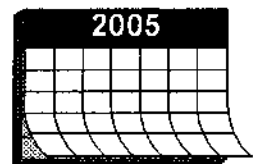
GHP
44 Village Square,
Glendale, OH 45246

Thank you to our Depot Museum Volunteers & Schedulers

By: Scott Vaaler, VP Depot Operations

A very big thank you to Debbie Mantick and Nancy Gulick who schedule all the wonderful volunteers who give of their time to keep the Depot open every Thursday and Saturday.

Please call Debbie at 772-6663 or Nancy Gulick at 771-3895. They're now scheduling July through December, 2005. We need you!





GLENDALE



HERITAGE



PRESERVATION

GHP Membership

By: Bob Galbraith, President

I think I goofed. Many people have told me I wrote a great membership request letter this year and I am very flattered to hear that. Unfortunately, it appears that I also gave people so much to think about and choose from that they forgot to renew their membership let alone sign up for a new membership.

As you know, GHP is a non-profit organization that depends on such events as the Membership Drive and Pancake Breakfast to generate the funds to not only operate the Depot Museum but contribute to the many preservation needs of Glendale.

So, now that you've had time to order the wonderful sesquicentennial book and complete the history on your home, please take the time to complete your annual membership form. It's a bargain! Only \$25 gets an entire year for the whole family.

We are working on some pretty exciting new developments in recording and display of the history of this wonderful village. We intend to develop a body of information that 50 or 100 years from now will be cherished and visited by history scholars.

Please fill in the enclosed membership form and send it in to show your support for the GHP.

Glendale Museum - COM

Glendale Heritage Preservation
44 Village Square
Historic Glendale, Ohio 45246

Return Service Requested

Non Profit Org.
U.S. Postage
PAID
Cincinnati, Ohio
Permit No. 3478



I r n p galbraith @ zoom^{town} . com

www.glendale.ohio.org

